



 **POWERSHADES**

FABRIC CATALOG

Style | Innovation | Automation

Upgrade Your Fabric Book

Access the portal or speak to your PowerShades territory sales manager to order your brand new fabric book with many functional and aesthetic upgrades. Packed with a wider selection of beautiful fabrics and with larger swatches to gain confidence in picking the perfect fabrics.

Features include:

New Fabric Lines

Larger Swatches

Exterior Selections

2022 Product Catalog

Easy to Navigate

Fabric Specifications

Wider Fabric Selection

Durable Binder



Fabric Legend

SOLAR FABRICS

- | Coulisse - Screen Essential
- | Mermet - E Screen
- | Phifer - SheerWeave 2500, 2410, 2390, 2360

ECO FRIENDLY FABRICS

- | Phifer - SheerWeave 4400, 4000, 4100

EXTERIOR FABRICS

- | Phifer - SheerWeave 2000
- | Phifer - SheerWeave 2100
- | Phifer - Suntex 90
- | Phifer - Suntex 95
- | Phifer - Tuffscreen

DECORATIVE FABRICS

- | Coulisse - Durban
- | Coulisse - Mombassa
- | Mermet - Avila Daylight
- | Mermet - Verona Daylight
- | Phifer - SheerWeave 7250R
- | Phifer - SheerWeave 7450
- | Turnils - Anno
- | Turnils - Fury
- | Turnils - LinenWeave
- | Turnils - Lylith
- | Turnils - Malacca

BLACKOUT FABRICS

- | Coulisse - Hampton
- | Coulisse - Mexico
- | Coulisse - Mombassa
- | Coulisse - Munich
- | Coulisse - Santiago
- | Mermet - Avila Twilight
- | Mermet - Verona Twilight
- | Phifer - SheerWeave 7200R
- | Phifer - SheerWeave 7400
- | Turnils - Malacca



Solar Fabrics

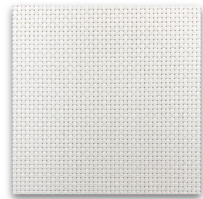
Solar fabrics provide a balance of light control, glare control, and UV protection while maintaining the users connection with the outside world. An ideal solution for both residential and commercial spaces. This collection features a wide range of colors, weave textures, and openness factors to compliment any decor.



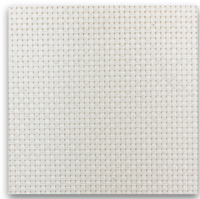
Screen Essential

1% 3% 5% 10%

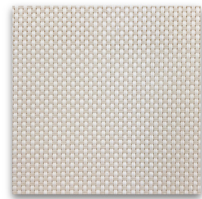
coulisse
since 1992



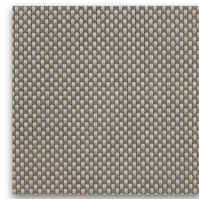
Ivory



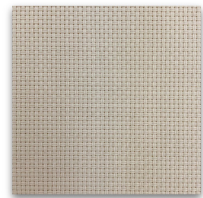
Chalk



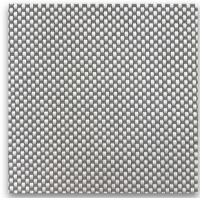
Chalk Beige Cream



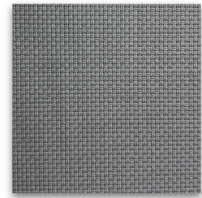
Beige Pearl Grey



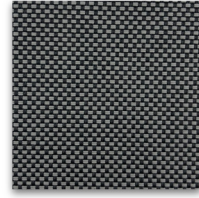
Grey Sand



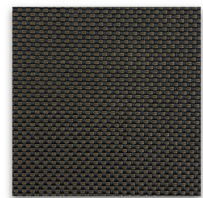
Chalk Soft Grey



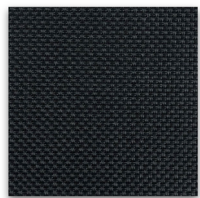
Soft Grey



Charcoal Iron Grey



Charcoal Dark Bronze



Ebony

STYLE:

Solar

OPENNESS FACTOR:

3001 = 1% 3003 = 3% 3005 = 5% 3010 = 10%

COMPOSITION:

70% PVC, 30% PES

UV BLOCKAGE:

1% = Approx. 99% | 3% = Approx. 97% | 5% = Approx. 95% | 10% = Approx. 90%

WEIGHT:

1% = 14.6oz. | 3% = 13.86 oz. | 5% = 12.09 oz. | 10% = 10.03 oz.

THICKNESS:

1% = 0.026 in. | 3% = 0.022 in. | 5% = 0.021 in. | 10% = 0.019 in.

WIDTH:

1% = 118 in. | 3% = 118 in. | 5% = 118 in. | 10% = 118 in.

FIRE CLASSIFICATION:

DIN 4102, CLASS B1

NFPA 701

UNE - EN 13773:2003 Class 1



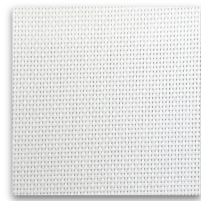
Price Group: 1

E Screen

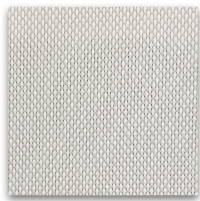
1% 3% 5% 10%



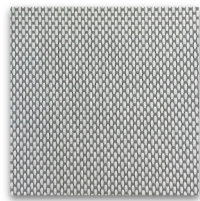
Sun Control Textiles™



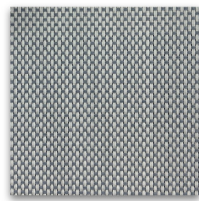
White/White



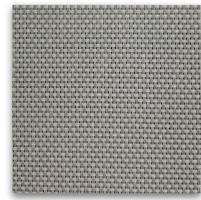
White/Linen



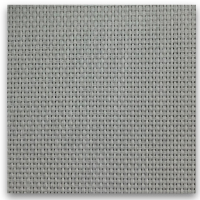
White/Pearl



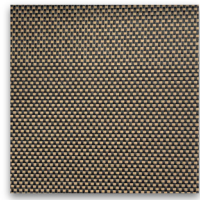
Pearl/Grey



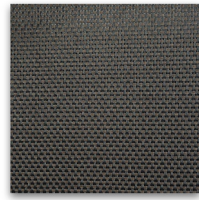
Pearl/Linen



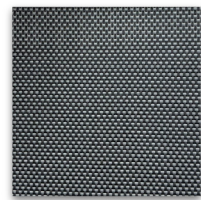
Pearl/Pearl



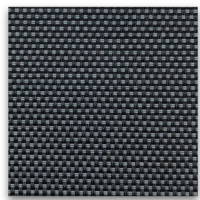
Charcoal/Apricot



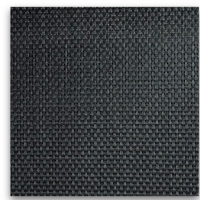
Charcoal/Cocoa



Charcoal/Grey-stone



Charcoal/Grey



Charcoal/Charcoal

STYLE:

Solar

OPENNESS FACTOR:

7501 = 1% 7503 = 3% 7505 = 5% 7510 = 10%

COMPOSITION:

36% GRP, 64% VINYL

UV BLOCKAGE:

1% = Approx. 99% | 3% = Approx. 97% | 5% = Approx. 95% | 10% = Approx. 90%

WEIGHT:

1% = 13.3 oz. | 3% = 11.6 oz. | 5% = 10.7 oz. | 10% = 10.03 oz.

THICKNESS:

1% = 0.020 in. | 3% = 0.017 in. | 5% = 0.016 in. | 10% = 0.020 in.

WIDTH:

1% = 122 in. | 3% = 122 in. | 5% = 122 in. | 10% = 122 in.

FIRE CLASSIFICATION:

NFPA 701

CAN/ULC-S109-03

Price Group:

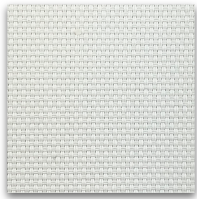
1% = 5 | 3% = 4 | 5% = 3 | 10% = 3



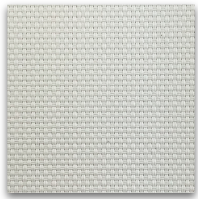
SheerWeave 2500, 2410, 2390, 2360

PHIFER

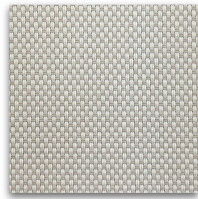
1% 3% 5% 10%



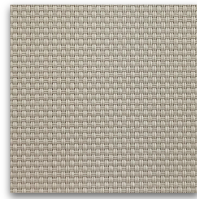
Brite White



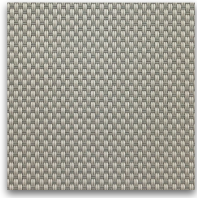
Oyster



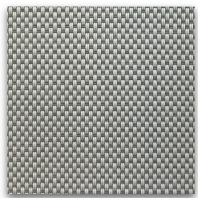
Oyster/Beige



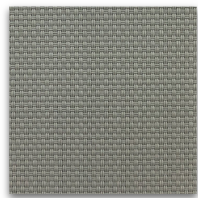
Beige



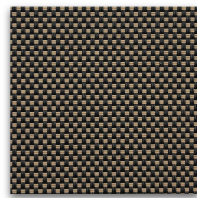
Beige/Pearl Grey



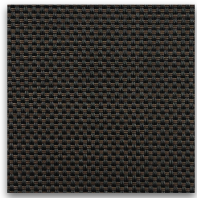
Oyster/Pearl Grey



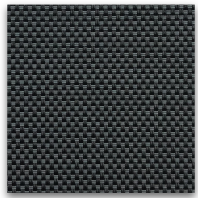
Pearl/Grey



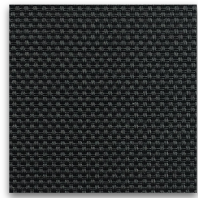
Charcoal/Alpaca



Charcoal/Chestnut



Charcoal/Grey



Pearl/Grey

STYLE:

Solar

OPENNESS FACTOR:

2500 = 1% 2410 = 3% 2390 = 5% 2360 = 10%

COMPOSITION:

37% GRP, 63% VINYL

UV BLOCKAGE:

1% = Approx. 99% | 3% = Approx. 97% | 5% = Approx. 95% | 10% = Approx. 90%

WEIGHT:

1% = 16.2 oz. | 3% = 14.1 oz. | 5% = 11.8 oz. | 10% = 10.04 oz.

THICKNESS:

1% = 0.024 in. | 3% = 0.020 in. | 5% = 0.017 in. | 10% = 0.019 in.

WIDTH:

1% = 126 in. | 3% = 126 in. | 5% = 126 in. | 10% = 126 in.

FIRE CLASSIFICATION:

NFPA 701

NFPA 101

CAN/ULC-S109

Price Group:

1% = 5 | 3% = 4 | 5% = 4 | 10% = 3



Eco Friendly Fabrics

Maintain the performance and feel of our high-quality shading solutions with a renewable alternative. Eco friendly fabrics are developed with sustainable materials that provide a reduction in greenhouse gas while preserving the benefits and luxury of traditional fabrics.



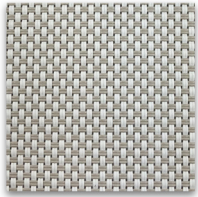
SheerWeave 4400, 4000, 4100

3% 5% 10%

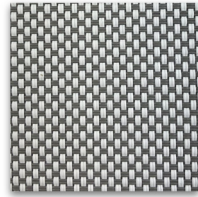
PHIFER



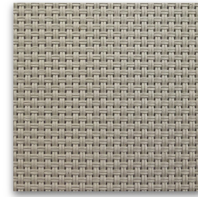
Eco Chalk



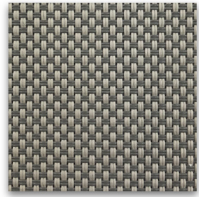
Eco Alabaster



Eco Granite



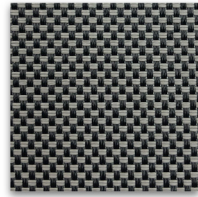
Eco Pebblestone



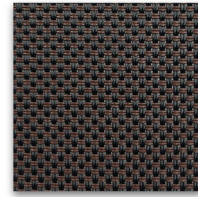
Eco Greystone



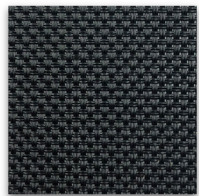
Eco Pewter



Eco Ash



Eco Tobacco



Charcoal/Alpaca

STYLE:

Solar/Eco

OPENNESS FACTOR:

4400 = 3% 4000 = 5% 4100 = 10%

COMPOSITION:

25% PES, 75% VINYL

UV BLOCKAGE:

3% = Approx. 97% | 5% = Approx. 95% | 10% = Approx. 90%

WEIGHT:

3% = 19.9 oz. | 5% = 18.0 oz. | 10% = 16.7 oz.

THICKNESS:

3% = 0.034 in. | 5% = 0.032 in. | 10% = 0.032 in.

WIDTH:

3% = 126 in. | 5% = 126 in. | 10% = 98 in.

FIRE CLASSIFICATION:

NFPA 701

NFPA 101



Price Group:

3% = 5 | 5% = 4 | 10% = 4

Decorative Fabrics

Decorative fabrics are a luxurious way to blend the traditional operation and clean look of a roller shade with the beauty of various colors and unique designs. Accent any room with elegant light filtering capabilities. This collection holds an assortment of stylish fabrics and soft textures that are sure to bring out the best of any space.



Durban

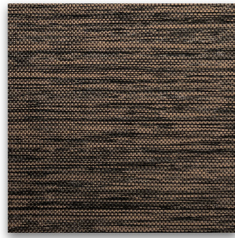
Light Filtering

coulisse

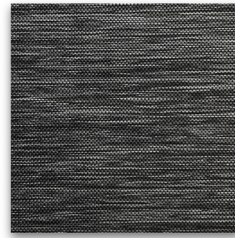
since 1992



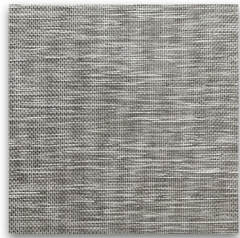
Grain



Bark



Charcoal



Mist

STYLE:

Decorative

OPENNESS FACTOR:

Light Filtering

COMPOSITION:

100% PES

WEIGHT:

7.32 oz.

THICKNESS:

0.024 in.

WIDTH:

110 in.



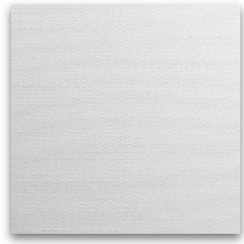
Price Group: 4

Mombassa

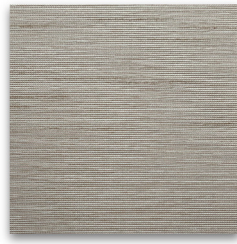
Light Filtering

coulisse

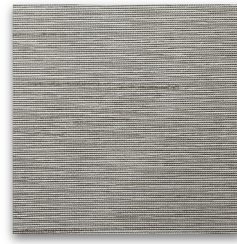
since 1992



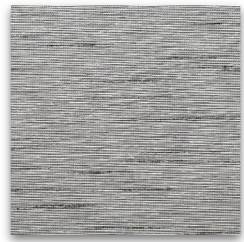
Snow



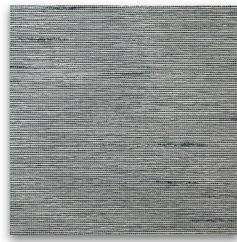
Sand



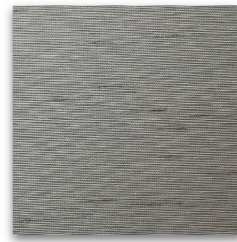
Oyster



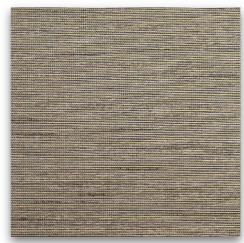
Dust



Ink



Ash



Grain

STYLE:

Decorative

OPENNESS FACTOR:

Light Filtering

COMPOSITION:

100% PES

WEIGHT:

5,9 oz.

THICKNESS:

0,013 in.

WIDTH:

118 in.



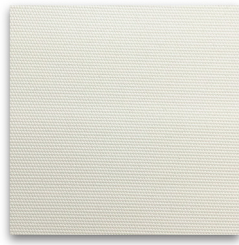
Price Group: 3

Avila Daylight

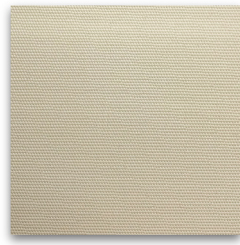
<1%



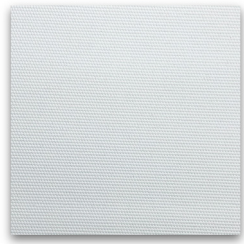
White



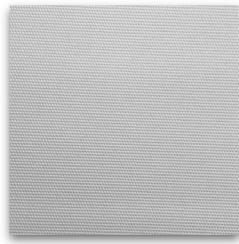
Canvas



Linen



Chalk



Frost

STYLE:

Decorative

OPENNESS FACTOR:

<1%

COMPOSITION:

100% PES

WEIGHT:

6.2 oz.

THICKNESS:

0.012 in.

WIDTH:

118 in.

FIRE CLASSIFICATION:

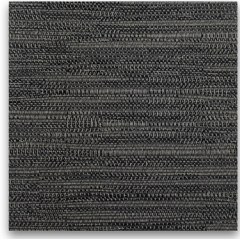
ATSM E84 (Class A)



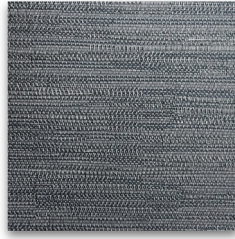
Price Group: 2

Verona Daylight

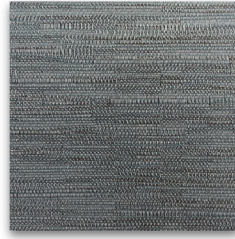
<1%



Eclipse



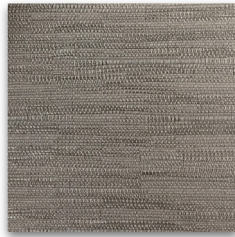
Calypso



Hydra



Stardust



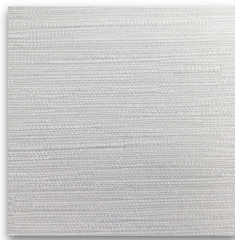
Orion



Nova



Luna



Polaris

STYLE:

Decorative

OPENNESS FACTOR:

<1%

COMPOSITION:

100% PES

WEIGHT:

5,9 oz.

THICKNESS:

0,021 in.

WIDTH:

118 in.

FIRE CLASSIFICATION:

NFPA 701

CAN/ULC-s109-03



Price Group: 2

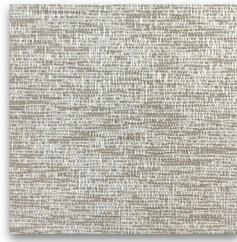
SheerWeave 7250R

Light Filtering

PHIFER



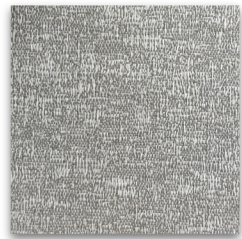
Swan



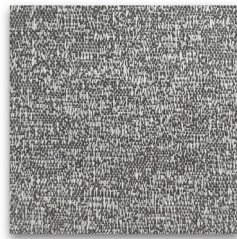
Oyster



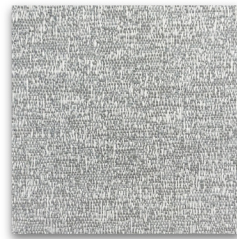
Sail



Chiffon



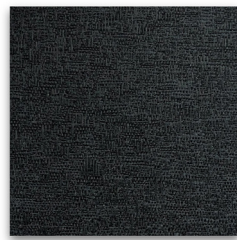
Earl Grey



Chrome



Blazer



Raven

STYLE:

Decorative

OPENNESS FACTOR:

Light Filtering

COMPOSITION:

100% PES

WEIGHT:

6.19 oz.

THICKNESS:

0.018 in.

WIDTH:

118 in.

FIRE CLASSIFICATION:

NFPA 101 (Class A)



Price Group: 2

SheerWeave 7450

Light Filtering

PHIFER



Cotton



Parchment



Sesame



Pebble



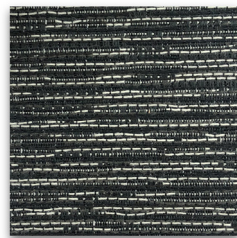
Shale



Seagrass



Spice



Flint

STYLE:

Decorative

OPENNESS FACTOR:

Light Filtering

COMPOSITION:

100% PES

WEIGHT:

6.19 oz.

THICKNESS:

0.0118 in.

WIDTH:

118 in.

FIRE CLASSIFICATION:

NFPA 101 (Class A)

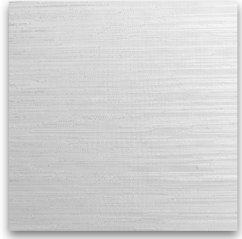


Price Group: 3

Anno

Light Filtering

TURNILS[®]



Cloud



Fog



Ocean

STYLE:

Decorative

OPENNESS FACTOR:

Light Filtering

COMPOSITION:

100% PES

WEIGHT:

2.24 oz.

THICKNESS:

0.013 in.

WIDTH:

102 in.

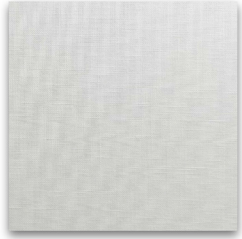


Price Group: 8

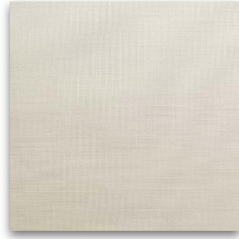
Fury

Light Filtering

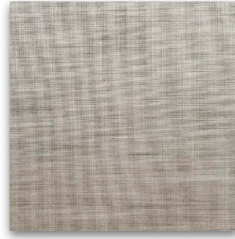
TURNILS[®]



White



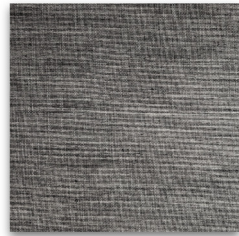
Off-White



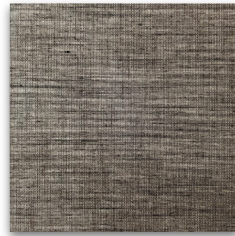
Pearl Linen



Nutmeg



Dark Gray



Brown

STYLE:

Decorative

OPENNESS FACTOR:

Light Filtering

COMPOSITION:

100% Trevira CS

WEIGHT:

2.95 oz.

THICKNESS:

0.013 in.

WIDTH:

118 in.

FIRE CLASSIFICATION:

NFPA 701-10



Price Group: 8

Linenweave

Translucent

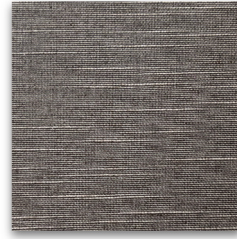
TURNILS[®]



Flax



Iron



Graphite

STYLE:

Decorative

OPENNESS FACTOR:

Translucent

COMPOSITION:

89% PES, 11% Linen

WEIGHT:

6.49 oz.

THICKNESS:

0.015 in.

WIDTH:

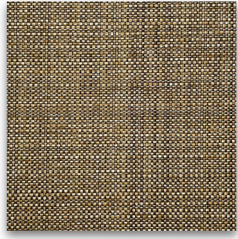
94 in.

Price Group: 3

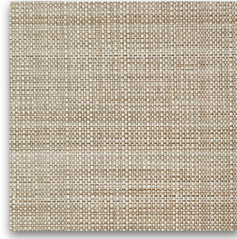
Lylith

Translucent

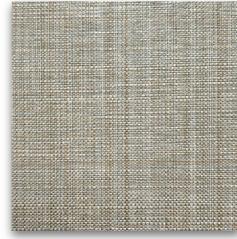
TURNILS®



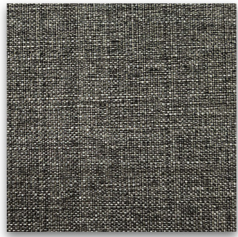
Nutmeg



Oatmeal



Pearl Grey



Shadow

STYLE:

Decorative

OPENNESS FACTOR:

Transparent

COMPOSITION:

100% PES

WEIGHT:

8.41 oz.

THICKNESS:

0.026 in.

WIDTH:

110 in.

Price Group: 8

Malacca

Translucent

TURNILS®



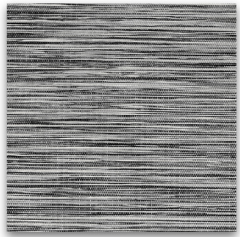
Light Coffee



Dune



Sunset



Grey

STYLE:

Decorative

OPENNESS FACTOR:

Translucent

COMPOSITION:

100% PES

WEIGHT:

11.06 oz.

THICKNESS:

0.02 in.

WIDTH:

94 in.



COMPANION FABRIC

Price Group: 3

Blackout Fabrics

Blackout fabrics provide excellent solar heat reduction and UV protection, leading to sufficient energy savings. Gain the ultimate experience in privacy for your residential or commercial space while maintaining a clean designer look. Achieve complete blackout with light-blocking upgrades such as side and sill channels.

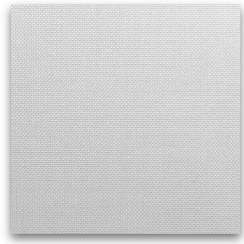


Hampton

Blackout

coulisse

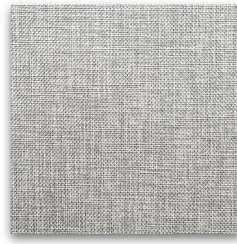
since 1992



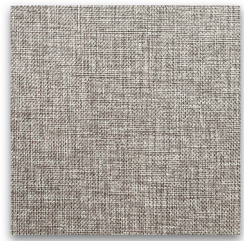
White



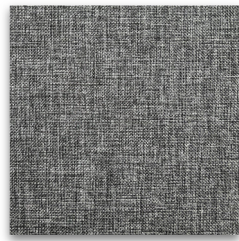
Off White



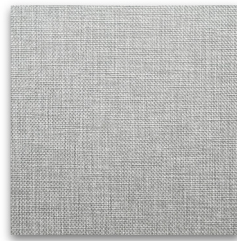
Sand



Beige



Anthracite



Light Grey

STYLE:

Blackout

OPENNESS FACTOR:

0%

COMPOSITION:

100% PES

WEIGHT:

11.7 oz.

THICKNESS:

0.024 in.

WIDTH:

110 in.



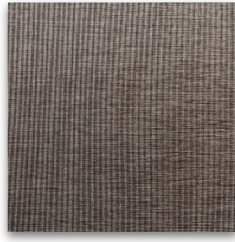
Price Group: 7

Mexico

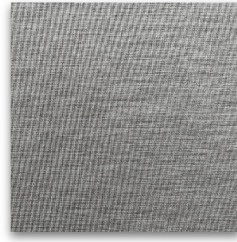
Blackout



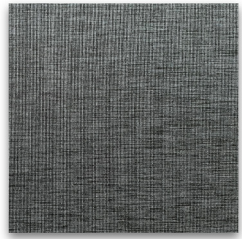
Sand



Coffee



Ash



Slate

coulisse

since 1992

STYLE:

Blackout

OPENNESS FACTOR:

0%

COMPOSITION:

100% PES

WEIGHT:

13.27 oz.

THICKNESS:

0.02 in.

WIDTH:

110 in.

FIRE CLASSIFICATIONS:

NFPA 701

DIN 4102



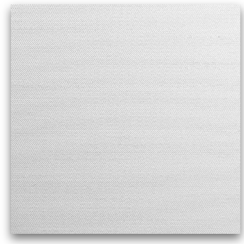
Price Group: 7

Mombassa

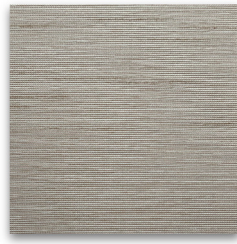
Blackout

coulisse

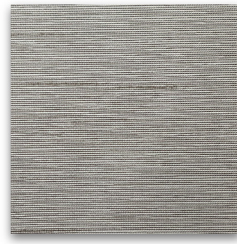
since 1992



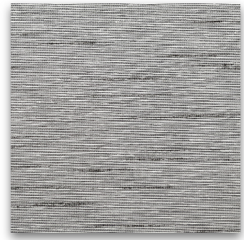
Snow



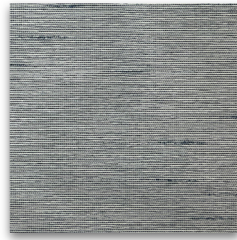
Sand



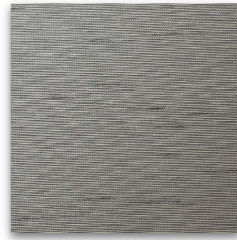
Oyster



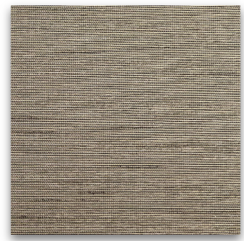
Dust



Ink



Ash



Grain

STYLE:

Blackout

OPENNESS FACTOR:

0%

COMPOSITION:

100% PES

WEIGHT:

11.8 oz.

THICKNESS:

0.022 in.

WIDTH:

118 in.



Price Group: 7

Munich

Blackout

coulisse

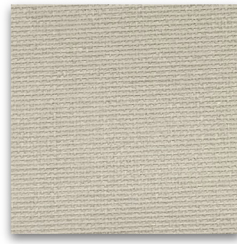
since 1992



Snow White



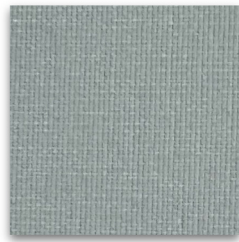
Oyster Grey



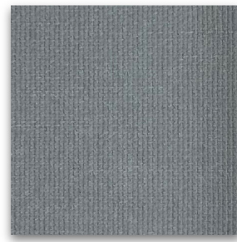
Bleached Sand



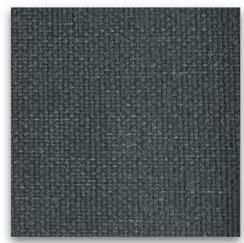
Moth



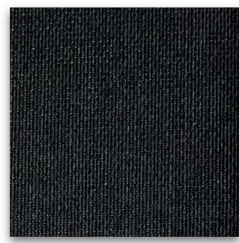
Limestone



Grey Anthracite



Clay



Dark Shadow

STYLE:

Blackout

OPENNESS FACTOR:

0%

COMPOSITION:

100% PES

WEIGHT:

8.55 oz.

THICKNESS:

0.016 in.

WIDTH:

118 in.



Tested for harmful substances according to Oeko-Tex® Standard 100



PRINTABLE



SEAMABLE

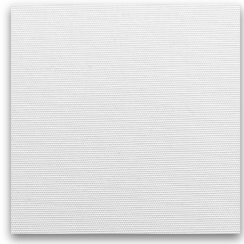
Price Group: 3

Santiago

Blackout

coulisse

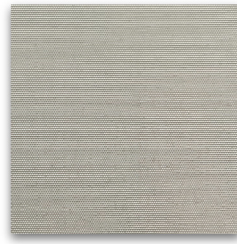
since 1992



Bright White



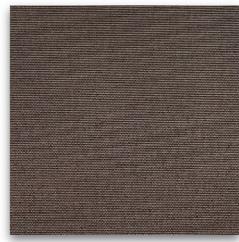
Blanc



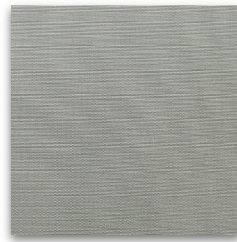
Gardenia



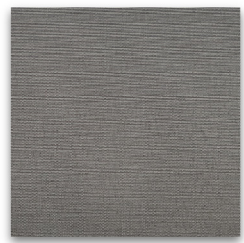
Sand



Chocolate



Metal



Raven



Black

STYLE:

Blackout

OPENNESS FACTOR:

0%

COMPOSITION:

100% PES

WEIGHT:

12.39 oz.

THICKNESS:

0.024 in.

WIDTH:

110 in.

FIRE CLASSIFICATION:

DIN 4102 (Class B1)



CONFIDENCE
IN TEXTILES
Tested for harmful substances
according to Oeko-Tex® Standard 100



PRINTABLE



RAILROADABLE



SEAMABLE

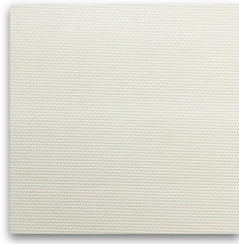
Price Group: 5

Avila Twilight

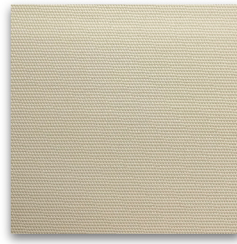
Blackout



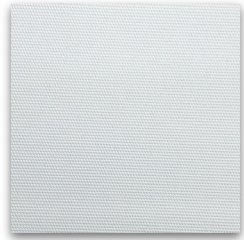
White



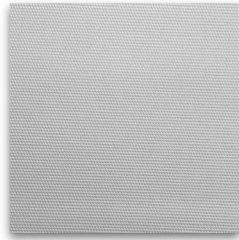
Canvas



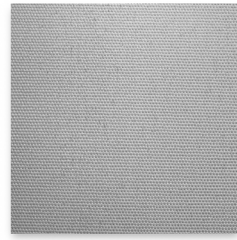
Linen



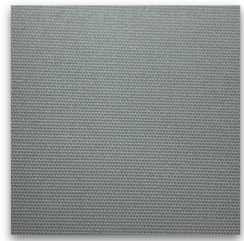
Chalk



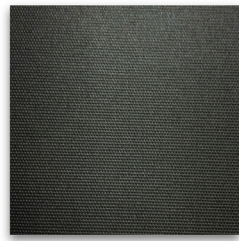
Frost



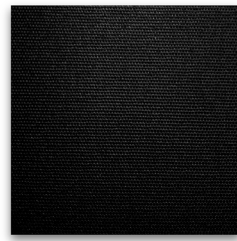
Ash



Pewter



Graphite



Black

STYLE:

Blackout

OPENNESS FACTOR:

0%

COMPOSITION:

38% PES, 62% Acrylic

WEIGHT:

12.24 oz.

THICKNESS:

0.018 in.

WIDTH:

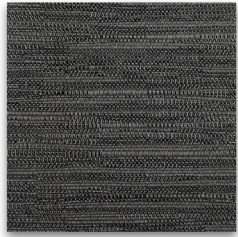
118 in.



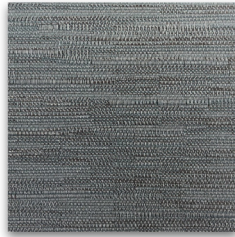
Price Group: 2

Verona Twilight

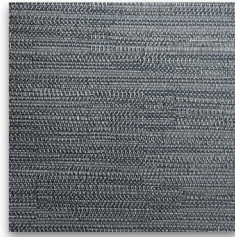
Blackout



Eclipse



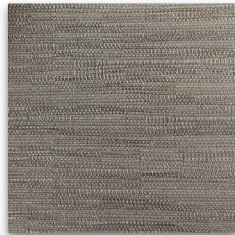
Calypso



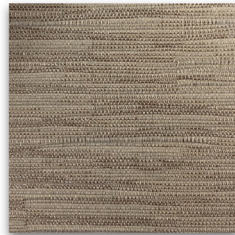
Hydra



Stardust



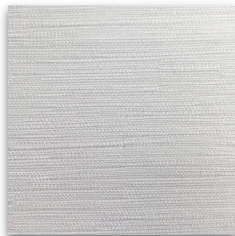
Orion



Nova



Luna



Polaris

STYLE:

Blackout

OPENNESS FACTOR:

0%

COMPOSITION:

50% PES, 50% Acrylic

WEIGHT:

11.65 oz.

THICKNESS:

0.024 in.

WIDTH:

118 in.

FIRE CLASSIFICATION:

NFPA 701

CAN/ULC -s109-03



Price Group: 5

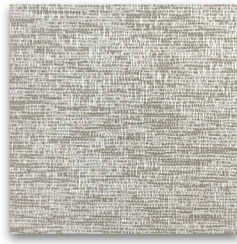
SheerWeave 7200R

Blackout

PHIFER



Swan



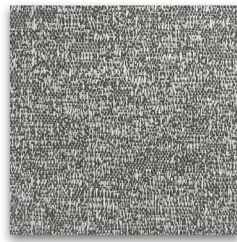
Oyster



Sail



Chiffon



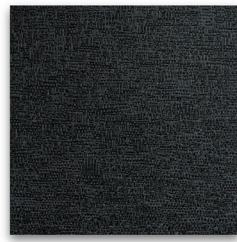
Earl Grey



Chrome



Blazer



Raven

STYLE:

Blackout

OPENNESS FACTOR:

0%

COMPOSITION:

100% PES

WEIGHT:

11.06 oz.

THICKNESS:

0.022 in.

WIDTH:

118 in.

FIRE CLASSIFICATION:

NFPA 101 (Class B)



Price Group: 5

SheerWeave 7400

Blackout

PHIFER



Cotton



Parchment



Sesame



Pebble



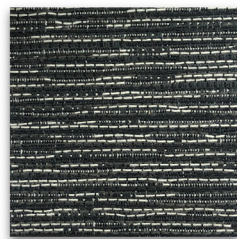
Shale



Seagrass



Spice



Flint

STYLE:

Blackout

OPENNESS FACTOR:

0%

COMPOSITION:

100% PES

WEIGHT:

12.53 oz.

THICKNESS:

0.029 in.

WIDTH:

118 in.

FIRE CLASSIFICATION:

NFPA 701



Price Group: 7

Malacca

Blackout

TURNILS®



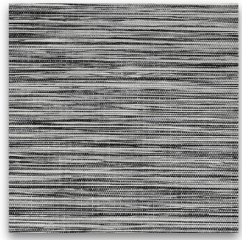
Light Coffee



Dune



Sunset



Grey

STYLE:

Blackout

OPENNESS FACTOR:

0%

COMPOSITION:

100% PES

WEIGHT:

14 oz.

THICKNESS:

0.031 in.

WIDTH:

94 in.



COMPANION FABRIC

Price Group: 3

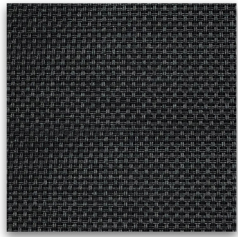
Exterior Fabrics

Exterior shades and screens allow you to extend the usable season of your outdoor space by moderating temperatures while keeping the pests away. Enhance privacy and protect expensive outdoor furniture from weather and harmful UV rays.

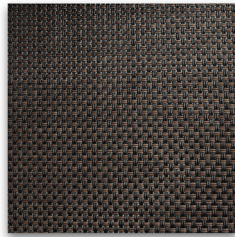


SheerWeave 2000, 2100

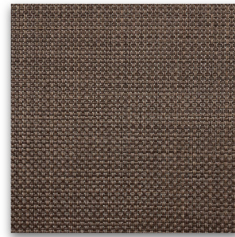
5% 10%



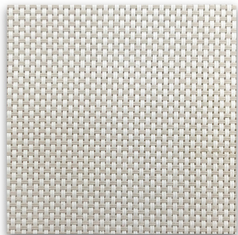
Charcoal



Charcoal Chestnut



Bronze



White Bone

PHIFER

STYLE:

Exterior

OPENNESS FACTOR:

2000 = 5% 2100 = 10%

COMPOSITION:

37% GRP, 63% Vinyl

WEIGHT:

5% = 14.4 oz. | 10% = 12.9 oz.

THICKNESS:

5% = 0.021 in. | 10% = 0.021 in.

WIDTH:

5% = 126 in. | 10% = 98 in.

FIRE CLASSIFICATION:

NFPA 701

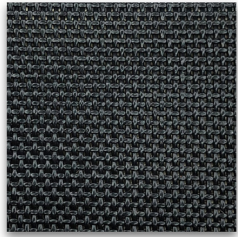
NFPA 101 (Class A)

CAN/CGSB2-4.162-M80

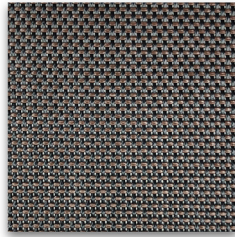


SunTex 90

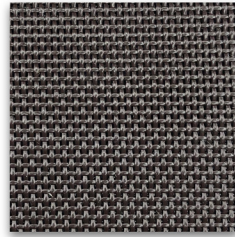
10%



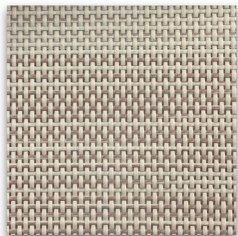
Black



Dark Bronze



Brown



Stucco

PHIFER

STYLE:

Exterior

OPENNESS FACTOR:

10%

COMPOSITION:

31% PES, 69% Vinyl

WEIGHT:

17.2 oz.

THICKNESS:

0.039 in.

WIDTH:

120 in.

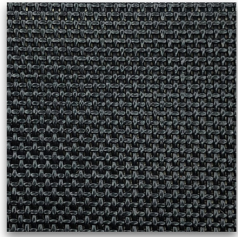
FIRE CLASSIFICATION:

NFPA 701

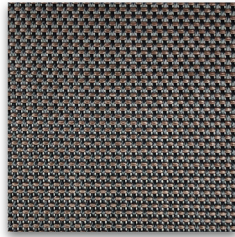


SunTex 95

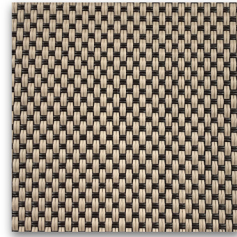
5%



Black



Dark Bronze



Mocha

PHIFER

STYLE:

Exterior

OPENNESS FACTOR:

5%

COMPOSITION:

28% PES, 72% Vinyl

WEIGHT:

15.1 oz.

THICKNESS:

0.029 in.

WIDTH:

126 in.

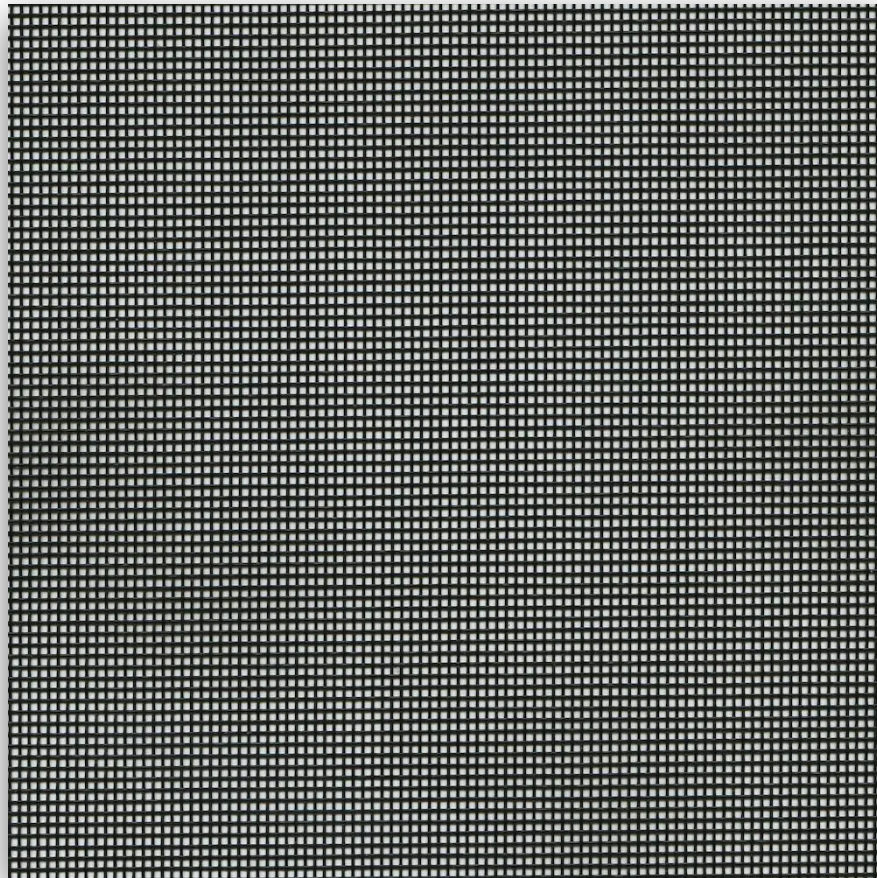
FIRE CLASSIFICATION:

NFPA 101 (Class A)



TuffScreen

45%



Black

PHIFER

STYLE:

Exterior

OPENNESS FACTOR:

45%

COMPOSITION:

Vinyl-coated PES

WIDTH:

132 in.



RAILROADABLE



EXTERIOR APPLICABLE