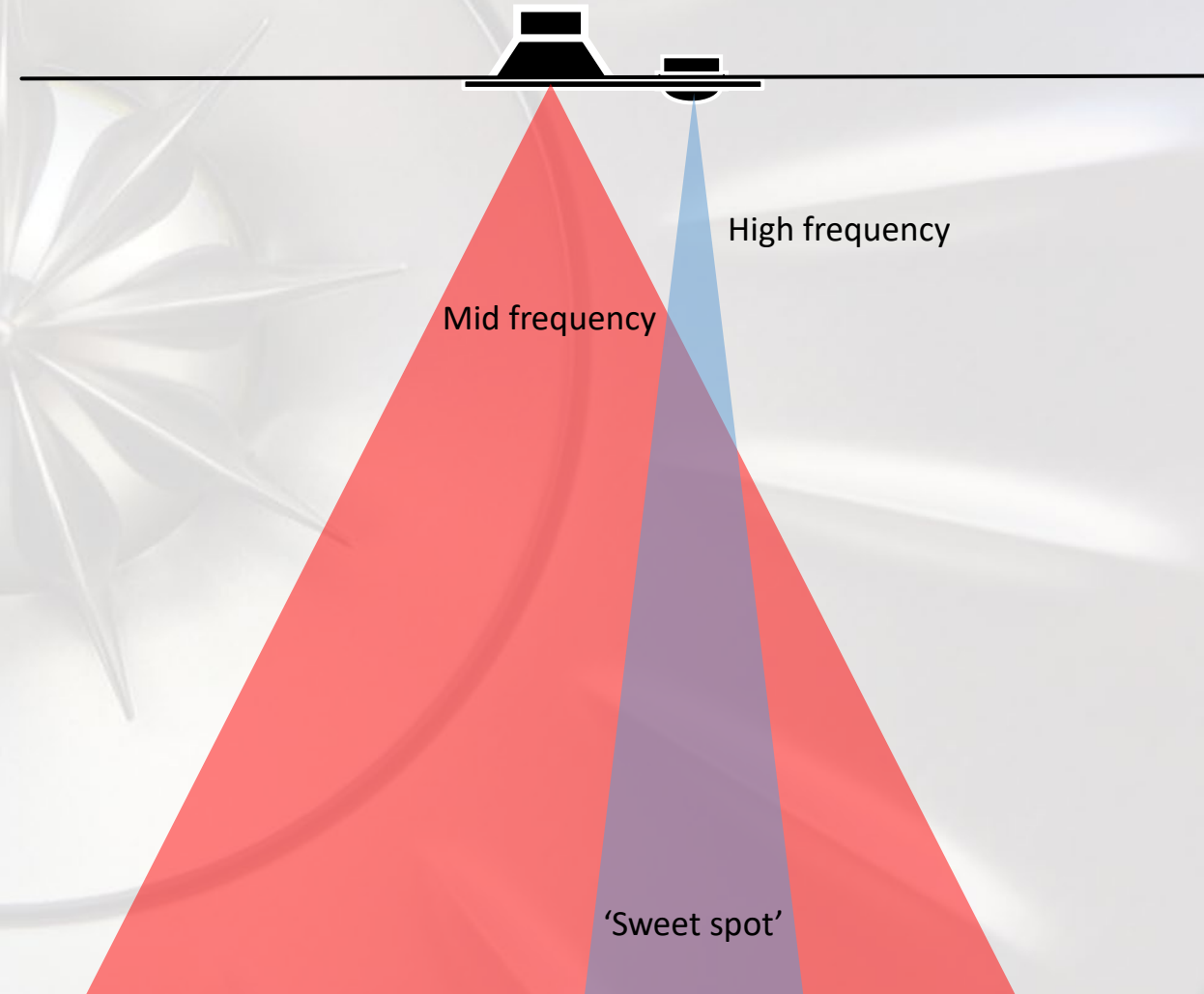


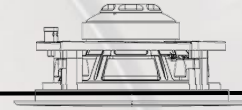
■ KEF ACADEMY

Module 460
Ci Architectural Speakers

- With standard in-ceiling speakers, positioning is limited to a small sweet spot – even the slightest move away from the sweet spot can result in lost acoustic response
- Placement in the ceiling also creates a distortion caused by diffraction

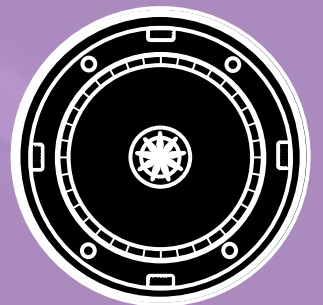


THE DIFFERENCE – UNI-Q



- Uni-Q's performance is equal 360° in all directions
- Because of this, Uni-Q's performance is not affected by mounting orientation
- Uni-Q's wide off-axis response ensures that every listener will hear every detail from every speaker

Uni-Q



THE DIFFERENCE – CONSISTENT VOICING

The Difference: Consistent Voicing

KEF speakers feature consistent voicing throughout all product ranges and models.

As you move through the ranges, nothing is lost, quality is gained. This provides two main benefits:

- Mixing and matching ranges is possible, through KEF's traditional and architectural ranges
- Whole home audio sounds consistent in every room

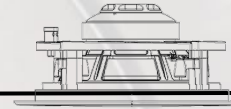


The Difference: Magnetic Grille

- The grille is held in place by powerful neodymium magnets situated behind the KEF logos that keep the grille from rattling even at low frequencies and high SPL
- Paintable, with high quality adhesive to allow repeated removal / replacement of scrim cloth
- Scrim cloth hides glare from drivers

The Difference: Magnetic Grille

- Seamless visual integration
- Paintable



THE DIFFERENCE IS IN THE DETAILS

- Fast and easy installation
- IP64 Certified by independent test lab
- Labeled grille box reduces accidental discarding
- Proprietary grille treatment for salt spray protection
- UV treated plastic components to reduce cracking
- Perfectly fitted paint shield that stays in place when speaker is installed

Swingout leg mounting



Gold Plated Spring Terminals

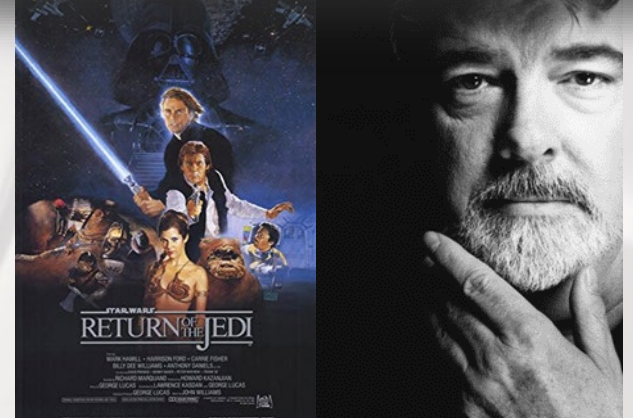




- Developed as a true Reference level product for in-wall use
- Like all KEF Reference products, hand assembled in Maidstone, UK
- Newly developed Uni-Q, bass drivers and separate crossover circuit boards deliver uncompromising KEF Reference sound quality
- THX Ultra 2 Certified
- Heavy duty, 11mm thick aluminum baffle
- Same cut-out size, mounting depth and cavity volume requirements as Ci5160RL-THX

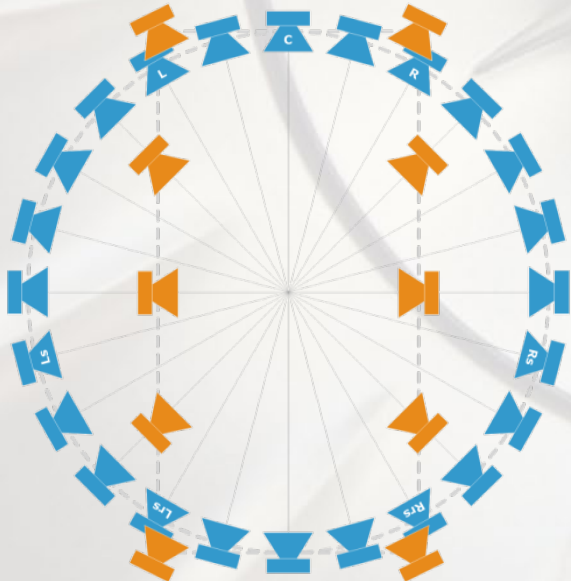
THX Certified Loudspeakers

- THX was pioneered in 1983 by George Lucas and the engineering team at Lucasfilm Ltd for Star Wars: The Return of the Jedi
- Lucas felt audiences weren't experiencing the full impact of movies due to inferior sound mixing and systems
- The goal was to reproduce content as the artists intended, and in 1991 the program grew to include home theatre
- KEF Extreme Home Theatre products comprise the Ci-REFERENCE and Ci-R Series ranges
- To achieve THX certification, loudspeakers are subjected to over 500 tests including:
 - Frequency response - Must have a balanced and flat response
 - Dispersion – Must have exceptional off-axis dispersion with no audible comb filtering
 - Distortion – Must play at THX Reference Level volume without any audible distortion or artifacts
 - KEF Extreme Theatre loudspeakers and subwoofers are certified for THX Select 2 (2000ft³ room size) and/or THX Ultra 2 (>3000ft³ room size), depending on model



DOLBY ATMOS

- Dolby Atmos® is a scalable surround sound technology that supports up to 32 loudspeakers, including 10 overhead channels
- Content is not tied to a specific playback configuration – a single mix will scale to the number of speakers being used
- Atmos creates amazing sound effects within the 3-D space of the listening room, completely enveloping the audience
- Uni-Q is an ideal technology for Dolby Atmos – the phenomenal off-axis response and pin-point imaging ensures that those in the front row experience the effects from the rear Atmos overhead speakers, and those in the back row can fully appreciate the front overheads



E/C/Q/R RANGE COMPARISON



E Series

- .6" HF Driver



.2C Series

- .6" HF Driver
- Crossover Cover
- Tangerine Waveguide



Q Series

- .75" HF Driver (Ci130/160)
- 1" HF Driver (Ci200)
- Crossover Cover
- Tangerine Waveguide
- Gold-plated spring-loaded binding posts
- More powerful motor system



R Series

- 1.5" HF Driver
- Crossover Cover
- Tangerine Waveguide
- Gold-plated spring-loaded binding posts
- Even more powerful motor system



- Based on KEF's proprietary 4.5" T Series flat woofer
- Ci160TS and Ci160TR will fit in a mounting depth of just 1.4" and share the same cutout as all of KEF's 6.25" Ci speakers
- The dedicated subwoofer, the Ci200TRb, fits in a mounting depth of <2.4"
- Ci200TRb has selectable stereo and mono input

Ci-SOUNDLIGHT SERIES

- Designed to seamlessly blend with LED light mountings
- Includes many of the same technologies found in the rest of the Architectural ranges
- Ci100QS/Ci100.2QR feature Uni-Q and integrated rear cans
- Ideal for installations where integrated design is key, for example bathrooms, kitchens and bedrooms



Ci100QS



Ci50R



Ci100.2QR



Ci3-80QT

- Excellent choice for use in theatres, for music or corporate boardrooms
- Truly hidden when retracted
- When retracted, Uni-Q delivers exceptional music reproduction
- When activated (via 12V trigger), Ci3-80QT smoothly glides into the perfect position for rock solid imaging

Take the quiz & earn points
on KEF Rewards Club for Distributors:

[CLICK HERE TO TAKE THE QUIZ.](#)



Thank You!